

MPT-3000RP

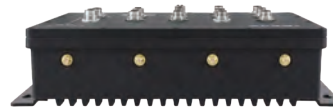
Système informatique ferroviaire - Certifié EN50155/EN45545 - IP67 extérieur -

Processeur Intel® Atom™ E3845 - Connexion M12 - WWAN redondant



Points Forts

- Certification EN50155 - Protection IP67
- Solution durcie Fanless
- Connectique M12 : dual GbE, USB, entrée alim.
- Dual SIM sockets supports WWAN redondant
- I/O interfaces : Wifi, SSD, GPS, WWAN
- Contrôle de la puissance d'allumage
- Interface GPIO de tension à large plage



Specifications

System Mainboard	MBT-3001R
CPU Type	Intel® Atom™ Processor E3845
System Speed	1.91GHz
Memory	2x 2GB DDR3L-1333 SO-DIMM (Dual Channel)
Construction	Aluminum
Chassis Color	Black
Front panel I/O	CFast, 2.5" device bay, 2x SIM sockets, 2x M12 USB 2.0, Status LEDs, 4x antenna connectors 1x M12 VGA, 3x M12 COMs, 2x M12 GbE, 1x M12 power connection 1x M12 GPIO, 1x M12 CAN Bus
Storage	2.5" device bay for SSD & HDD M.2 SSD Storage
Expansion slots	1x Half-size Mini PCI-E socket (USB 2.0) 1x Full-size Mini PCI-E socket (USB 2.0 + PCI-E) 1x 2230 Socket 1 M.2 socket (USB 2.0 + PCI-E) 1x 3042 Socket 2 WWAN M.2 socket (USB 2.0) 1x 2280 Socket 3 SSD M.2 socket (SATA)
Power Supply	DC 9V~36V / 72V / 110V
Mounting	Wall Mount
Dimensions	270.0 (W) x 63.0 (D) x 210.0 (H) mm 10.62" (W) x 2.48" (D) x 8.26" (H)
Operating Temperature	SSD: -40°C ~ 70°C (-40°F~158°F)
Storage Temperature	-40°C ~ 85°C (-40°F~185°F)
Relative Humidity	10 ~ 95% RH @ 45°C (non-condensing)
Vibration	Function: 1 m/s ² , 5Hz ~ 150 Hz (EN 61373) Lifetime: 5.72 m/s ² , 5Hz ~ 150 Hz (EN 61373)
Shock	50 m/s ² , 30 msec (EN 61373)
Certification	EN50155: 2007, EN50153:2014 EN50121-3-2:2015, CE class A, FCC class A, EN45545

Référence de Commande

MPT-3000RPSM	MPT-3000RPSM with MBT-3001R (Intel® E3845) w/ 2x 2GB DDR3L-1333, SSD bay, No PSU, No storage (RoHS)
--------------	---

Dimensions

